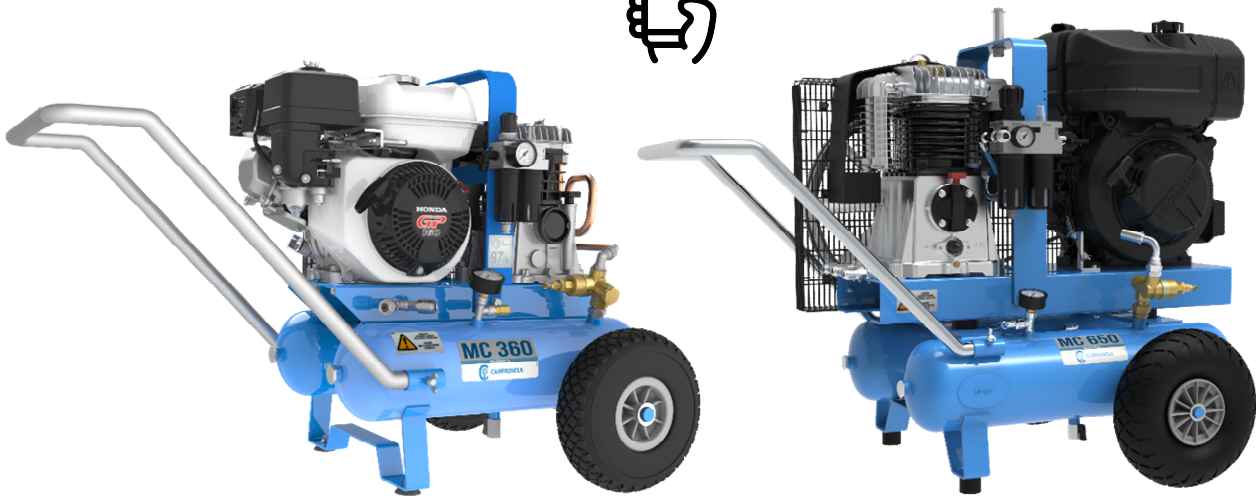
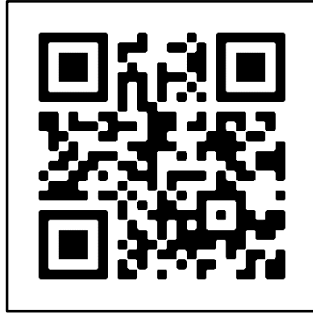


## GUIDA RAPIDA PER MOTOCOMPRESSORI A SPINTA QUICK GUIDE FOR THE TOWED ENGINE-DRIVEN COMPRESSORS



**IT** - Per scaricare il manuale di istruzioni completo andare sul sito [www.campagnola.it](http://www.campagnola.it) oppure scansionare il codice QR. La presente guida rapida non sostituisce il manuale del prodotto che deve comunque essere letto e compreso nella sua interezza.

**EN** - To download the complete instruction manual go to [www.campagnola.it](http://www.campagnola.it) or scan the QR code. This quick guide does not replace the product use and maintenance manual, which has to be thoroughly read and understood in all its parts.

**ES** - Para descargar el manual de instrucciones completo, vaya a [www.campagnola.it](http://www.campagnola.it) o escanee el código QR. Esta guía rápida no reemplaza el manual de uso y mantenimiento del producto, que debe leerse y entenderse con cuidado en todas sus partes.

**DE** - Um die vollständige Bedienungsanleitung herunterzuladen, besuchen Sie [www.campagnola.it](http://www.campagnola.it) oder scannen Sie den QR-Code. Diese Kurzanleitung ersetzt nicht das Produkt-Bedienungs- und Wartungshandbuch, das in allen Teilen sorgfältig gelesen und verstanden werden muss

**FR** - Pour télécharger le manuel d'instructions complet, allez sur [www.campagnola.it](http://www.campagnola.it) ou scannez le code QR. Ce guide rapide ne remplace pas le manuel du produit qui doit être dans tous les cas lu et compris dans son intégralité.

**SL** - Če želite prenesti celoten priročnik za uporabo, pojdite na [www.campagnola.it](http://www.campagnola.it) ali skenirajte QR kodo. Ta hitri vodnik ne nadomešča celotnih navodil za uporabo izdelka, ki jih je treba v vsakem primeru v celoti prebrati in razumeti.

**EL** - Για να κατεβάσετε το πλήρες εγχειρίδιο οδηγιών, μεταβείτε στη διεύθυνση [www.campagnola.it](http://www.campagnola.it) ή σαρώστε τον κωδικό QR. Ο παρόν γρήγορος οδηγός αντικαθιστά το εγχειρίδιο του προϊόντος που σε κάθε περίπτωση πρέπει να διαβάζεται και να κατανοείται πλήρως.

**TR** - Komple kullanım kılavuzunu indirmek için [www.campagnola.it](http://www.campagnola.it) adresine gidin veya QR kodunu tarayın. İş bu hızlı kılavuz her durumda her bölümünün okunması ve anlaşılması gereken ürün kılavuzunun yerine geçmez.



### RIFORNIMENTO MOTORE - ENGINE REFUELLING



Riempire il serbatoio del carburante. Il motore deve essere spento e freddo.

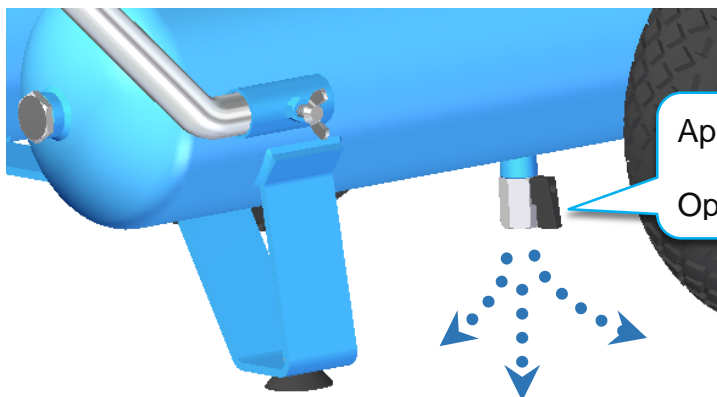
Fill up the fuel tank. The engine must be off and cold.



CAMPAGNOLA

## AVVIAMENTO E RODAGGIO MOTOCOMPRESSORE TOWED ENGINE-DRIVEN COMPRESSOR STARTING AND RUNNING IN

①



Aprire i rubinetti di scarico del serbatoio.

Open the tank air exhaust taps.



10 min

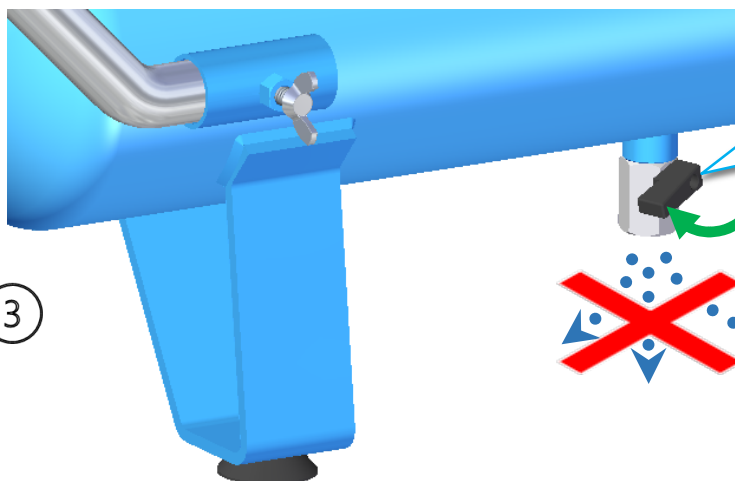
②

Accendere il motocompressore e farlo funzionare a vuoto per circa 10 min.

Start the engine-driven compressor and make it idle for about 10 minutes.



③



Chiudere i rubinetti di scarico del serbatoio.

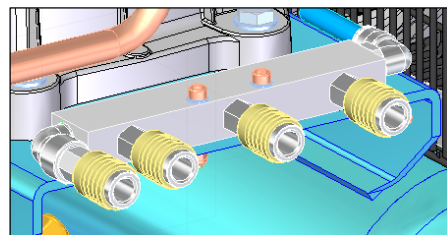
Close the tank air exhaust taps.



CAMPAGNOLA

- 4 Per utilizzare l'aria compressa, inserire i tubi di alimentazione degli attrezzi nei raccordi dotati di valvola automatica.

To use the compressed air, simply attach the air hoses to the fittings, which are fitted with an automatic valve.



### Hobby Air



### MC 360



### MC 545 & MC 548



### MC 550 & MC 658



### MC 650



### MC 660



### MC 950



### MC 1200



### MC 550 SEMOVENTE



### MC 950 SEMOVENTE

